

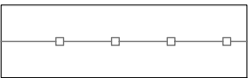




LEGEND


BOUNDARY

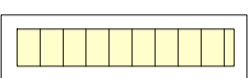
EXISTING CONTOURS


SECURITY FENCE


NATIVE PLANT BUFFER TYPE 1

NATIVE PLANT BUFFER TYPE 2

LAY DOWN AREA DURING CONSTRUCTION

TEMPORARY PARKING DURING CONSTRUCTION

SOLAR PANELS

EXISTING TREE TO REMAIN

PROPOSED PLANT SCHEDULE - NATIVE PLANTING TYPE 1					
KEY	BOTANICAL NAME	COMMON NAME	QTY per/m2	MATURE HGT	POT SIZE
CC DV WF	SHRUBS				
	CALLISTEMON CITRINUS 'ENDEAVOUR'	ENDEAVOUR BOTTLEBRUSH	1	2.5m	200mm
	DODONAEA VISCOSA	HOP-BUSH	1	2.5m	200mm
	WESTRINGIA FRUTICOSA	COASTAL ROSEMARY	1	1.5m	200mm
LL TA	GRASSES / GROUND COVERS				
	LOMANDRA LONGIFOLIA	SPINY-HEADED MAT-RUSH	2	1m	140mm
	THEMEDA AUSTRALIS	KANGAROO GRASS	4	0.5m	140mm

PLANTING PALETTE



CALLISTEMON CITRINUS 'ENDEAVOUR'



DODONAEA VISCOSA



WESTRINGIA FRUTICOSA



LOMANDRA LONGIFOLIA



THEMEDA AUSTRALIS

PROPOSED PLANT SCHEDULE - NATIVE PLANTING TYPE 2					
KEY	BOTANICAL NAME	COMMON NAME	QTY per/m2	MATURE HGT	POT SIZE
BS GR ME	SHRUBS				
	BANKSIA SPINULOSA	HAIRPIN BANKSIA	1	2m	tube
	GREVILLEA 'ROBYN GORDON'	ROBYN GORDON GREVILLEA	1	1.5m	tube
	MELALEUCA THYMIFOLIA	THYME HONEY-MYRTLE	2	0.6m	tube
DC MP	GRASSES / GROUND COVERS				
	DIANELLA CAERULEA	BLUE FLAX LILY	4	0.6m	tube
	MYOPORUM PARVIFOLIUM 'YAREENA'	YAREENA	2	0.1m	tube

PLANTING PALETTE



BANKSIA SPINULOSA



GREVILLEA 'ROBYN GORDON'



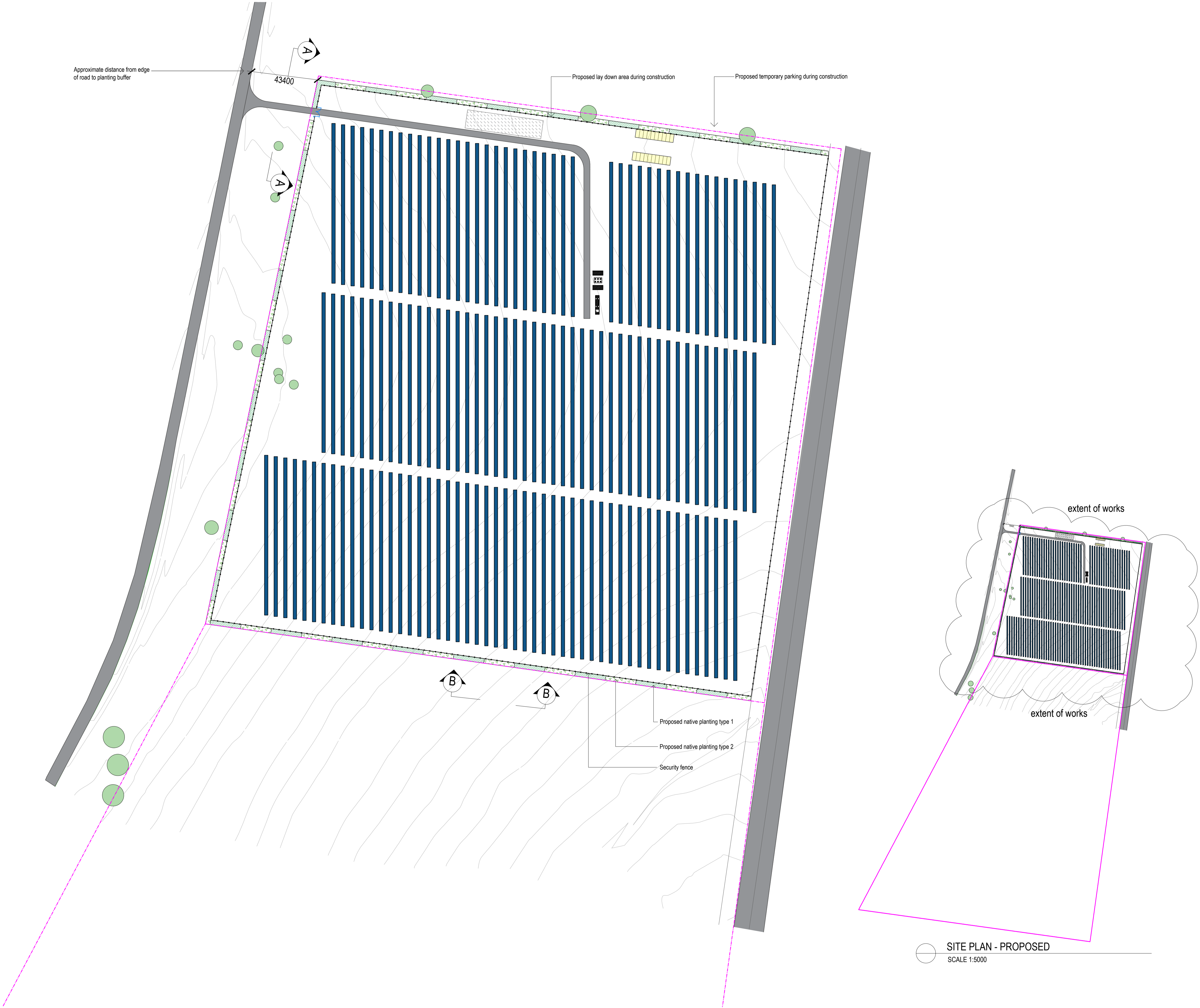
MELALEUCA THYMIFOLIA

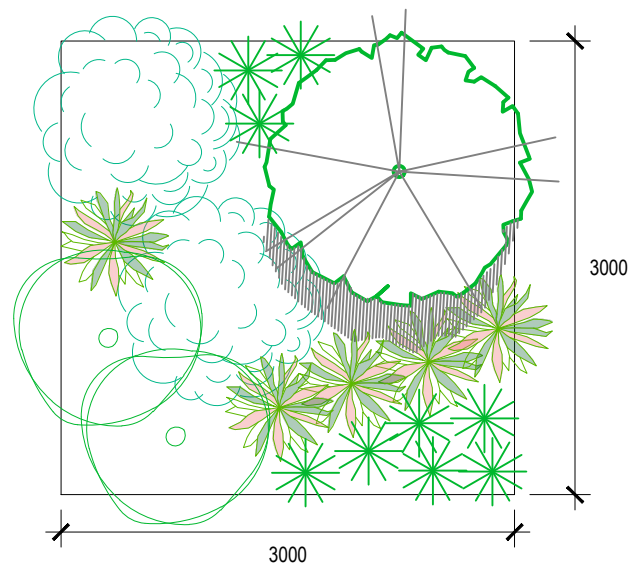
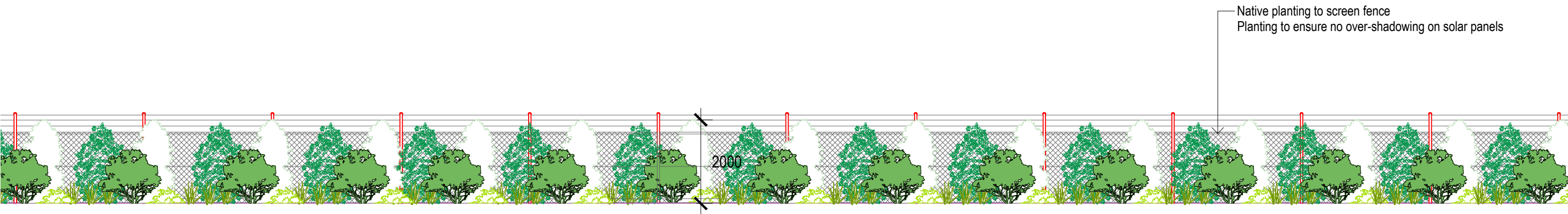
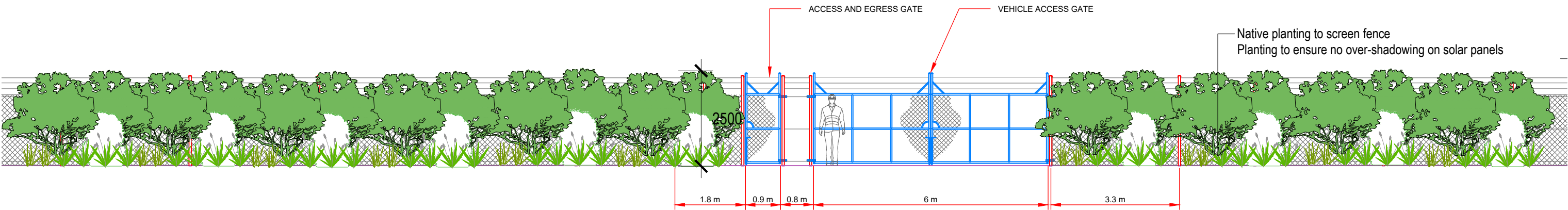


DIANELLA REVOLUTA

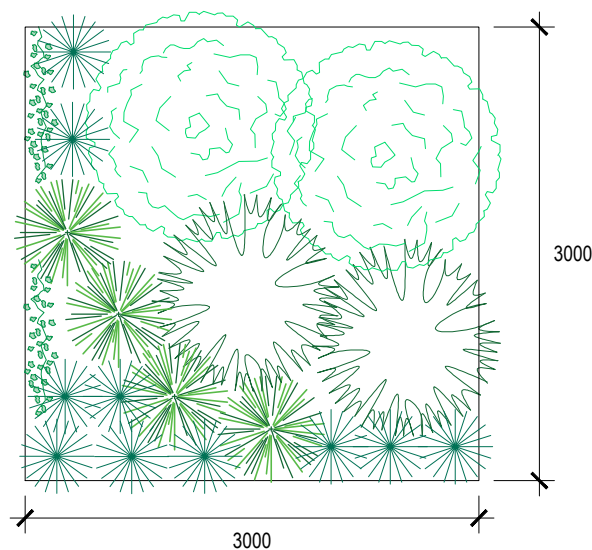


MYOPORUM PARVIFOLIUM 'YAREENA'

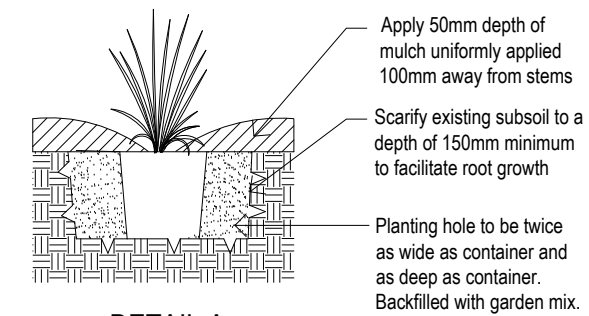




NATIVE PLANT MIX TYPE 1 - MATRIX
SCALE 1:50.



NATIVE PLANT MIX TYPE 2 - MATRIX
SCALE 1:50.



DETAIL A
TYPICAL SHRUB PLANTING DETAIL N.T.S.

NOTES:
- Contractors to check and verify all dimensions and all levels on site prior to any works.
- Any discrepancies should be immediately referred to Space Landscape Designs.
- All work to comply with B.C.A. Statutory Authorities and relevant Australian Standards.
- Dimensions recognised over scaling. All measurements are in millimetres.

Rev.	Date	Issue
A	11/06/21	Preliminary Issue
B	17/06/21	DA Issue

Checked
AE
AE

SPACE
LANDSCAPE DESIGNS

Space Landscape Designs Pty Ltd
ABN 60 799 663 674 ACN 139 316 251
info@spacedesigns.com.au
spacedesigns.com.au
P 02 9905 7870 F 02 9905 7657
Suite 138, 117 Old Pittwater Rd,
Brookvale NSW 2100

PROJECT:
Gunnedah Solar Farm
SITE ADDRESS:
**Wandobah Rd, Gunnedah
NSW 2380**

CLIENT: **ITB Developments**
DRN: **Y.Chen(M.LArch)**
SCALE: **1:100@A3**
PROJECT NO: **211894**



DRAWING TITLE:
ELEVATION & DETAIL PLAN
DRAWING No:
L-02
Rev: **B**

LANDSCAPE SPECIFICATION NOTES

SITE PREPARATION

Locate any underground and overground services & ensure no damage occurs. Levels on plan are nominal only & all dimensions to be checked on site prior to commencement. Final structural integrity of all items shall be the sole responsibility of landscape contractor.

PROTECTION OF EXISTING TREES:

Prior to construction, the builder shall erect tree protection fencing to the drip line of existing trees to be retained. The fence shall be constructed of star pickets at 2.4m spacings and connected by three strands of 2mm wire at 300mm spacings to a minimum height of 1500mm. Protect all trees affected by demolition & construction. Take necessary precautions to protect the Structural Root Zone(SRZ) as per AS 4970-2009 Australian Standard for Protection of Trees on Development Sites.Tree protection measures shall remain intact until the completion of all construction works. Prohibited Works or material storage within the TPZ as per AS 4970-2009 except with approval of council:

- entry of machinery or storage of building materials, parking of any kind of vehicle
- erection or placement of site facilities, removal or stockpiling of soil or site debris, disposal of liquid waste including paint & concrete wash
- excavation or trenching of any kind (including irrigation or electrical connections).
- attaching any signs or any other objects to the tree, placement of waste disposal or skip bins
- pruning and removal of branches, other than those by a qualified Arborist

Compacted Ground/Coring: Avoid compaction of the ground under trees. If compaction nevertheless occurs loosen the soil by Coring. Coring to be carried out by a qualified Arborist.

ELIMINATE WEEDS

Remove all existing weeds by hand, wiping or spraying with a glyphosate based herbicide. Weed control shall never be performed by mechanical cultivation or by scraping. Herbicide spraying is to be used to eliminate all existing weeds 30 days prior to planting.

EXCAVATION & SUB SOIL PREPARATION

Excavate garden beds to the depth required and rip or scarify base & sides of pit to a minimum depth of 150mm.

SUB SOIL DRAINAGE

Install drainage layer where there is surface water runoff draining into garden bed areas & where the existing sub-soil has more than 50% clay composition & there is a risk of subsurface water ponding. Install perforated corrugated ag. line 75-100mm Dia. with geotextile filter sock & backfill to a minimum 200mm using free draining material, reclaimed/recycled where available. Direct flows at a minimum 0.5% fall to SW system. In areas isolated from stormwater system excavate & backfill an appropriate water dispersion pit.

REUSE EXISTING TOPSOIL

Existing site topsoil should be salvaged & appropriately stockpiled where possible.

IMPORTED TOPSOIL

All construction must comply with AS 4419-2003 Soils for Landscaping and Garden Use. Tree Pit and Shrub Planting: 'Premium Garden Mix' as supplied by, ANL p: 02 9450 1444 or approved alternative.

TREE STOCK

Tree stock to be supplied by production nurseries in accordance with AS 2303:2018 Tree Stock for Landscape Use. Health & Vigour: Supply plants with foliage size, texture & colour consistent with that shown in healthy specimens of the species. Balance of Crown: Supply plants with max. variation in crown bulk on opposite sides of stem axis, +/- 20%. Stock selection should also be based on NATSPEC Guide *Specifying Trees: a Guide to Assessment of Tree Quality*.

MULCHING

All construction must comply with AS 4454-2003 Compost, soil conditioners and mulches. All planting area impacted by building works to receive 50-75mm of garden Mulch, Droughtmaster, ANL p: 02 9450 1444 or approved alternative. Keep mulch 100mm away from plant stem & form a well to stop excessive water runoff. Finish flush with adjacent surfaces.

WATERING

Water in immediately after plant installation & allow for soil settlement. For the first 2 to 4 weeks after planting, the root zone & immediate surrounds must be kept moist. Continue watering until plants have established.

MAINTENANCE STRATEGY

For the successful establishment of plants it is essential that adequate maintenance on a regular basis be provided. This regular maintenance will encourage quick development of the trees and reduce the cost of replacing dying plants.

WATERING

Adequate watering during plant establishment is required for the first few weeks. The rootball and surrounding soil should be adequately moist. As th plants establish the intervals should increase and then the plant should only be watered at the first signs of wilting. After 3-6 months the plant should b able to survive on its own.

FERTILISING

Fertilising will only be required if the plant is indicating signs of poor condition and slow growth due to nutrient deficiencies. If fertilising is deemed to b necessary it will be carried out after the second seasons growth at the end of the second growing season in late summer to autumn. N:P:K ratios an application rates vary greatly depending on conditions of use. Consult manufacturers for application rates suitable for individual plantings. Fertilisers may b applied to the soil in an organic granular application with a low phosphorus and nitrogen content, applied in a broad casting fashion to quantities & rate described on fertiliser bags.

MULCHING

Following planting, rake all garden areas and tamp lightly to give an even graded surface. Spread 75mm layer of mulch as specified over the surface of a garden beds and cove down to finish flush with tops of kurbs, pavements and garden edging. Care shall be taken not to mix soil and mulch together. A mulching is to be carried out with AS 4454 composted organic material, low in phosphorous and derived from the raw material, green waste. Mulchin materials must be sourced from a certified fully licensed Australian Standard producer. Every 6 months all garden beds are to be checked to ensure there i sufficient mulch. If additional mulch is required it will be to a maximum depth of 75mm and 100mm from the tree trunk.

REMEDIAL PRUNING

Pruning will be an ongoing process, which will require the periodical removal of unsightly dead wood, hazardous branches and view obstructing branches.

WEEDING

Weed control measures should aim to eliminate weed germination and establishment. Weeds are to be controlled while young and before seed set. Declared noxious weeds require action, varying from treatment to removal. Contact Council's Noxious Weeds Officer for further information.

PLANT STAKING AND TYING

If plants are self supporting in the container then there is no need to stake.

PEST AND DISEASE CONTROL

Treatment of pests and diseases is important for maintaining healthy plants. Non-chemical controls and treatments should always be considered first. Natural control of pests is encouraged uses the following measures:

- Removing the parts affected by disease, Hand removal of certain pests, Encouraging birds

REPLANTING

Should any plants require replacing the same species and pot size shall be used. The following guidelines are recommended:

- Plants are to be removed from their containers with all labels removed.
- A hole is to be excavated at 2-3 times the diameter of the container and at the same depth as the root ball with the sides loosened.
- No organic matter, gravel or coarse material to be placed at the bottom of the planting hole.
- Roughen or prune lightly the outside of the root ball.
- All plants are to be planted so the top of the root ball is level with the existing ground level.
- Original site soil is to be used as back fill around plant. Plants to be watered in.Apply mulch to a depth of 75mm and 100mm away from the trunk

SOIL TESTING

If growth of plants is poor or every 3 months during twelve month establishment period, a soil pH test should be performed at 5 different locations. Tak each sample to spade depth. Follow the instructions as per the pH colourmetric kit to check the soil pH is at an acceptable level.